

# U/S Mentor Simulator COVID-19 Disinfection Protocol

**Note:** When using the simulator, it is recommended to use protection equipment (disposable gloves and face mask).

## Prior to Cleaning Simulator:

1. Power down the simulator and disconnect AC power.
2. Put on disposable gloves.

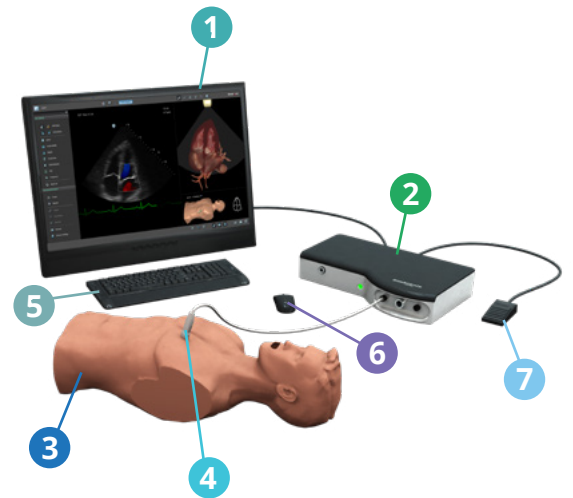
## Cleaning Simulator Parts:

1. Dampen a new clean microfiber cloth with the recommended disinfectant (see table below). Ensure excess liquid is squeezed from the cloth. You may also use pre-dampened isopropyl alcohol wipes.
2. Gently wipe the moistened surfaces to be cleaned.

### Warning:

- Never clean a simulator while it is powered on or plugged in.
- Never spray/spill liquids of any kind directly onto the simulator.

Simulator Part	Disinfectant
1 Computer Touchscreen	Standard IPA (Isopropyl Alcohol) at 70% alcohol concentration for cleaning and disinfecting. DO NOT use IPA at concentration >70%
3 Mannequin	Warm water with soap for overall cleaning or Standard IPA for spot cleaning
2 Electronic Box 4 Probes 5 Wireless Keyboard 6 Wireless mouse 7 Foot switch	Standard IPA (Isopropyl Alcohol) for cleaning and disinfecting (at least 70%)



## After Cleaning:

1. Make sure there is no visible moisture on the surfaces of the simulator before it is powered on or plugged in.  
**Important:** After cleaning and completely drying, **spread talc powder** over the mannequin to prevent stickiness and reduce friction with the probe.
2. Remove and dispose gloves.
3. Wash your hands immediately after gloves are disposed.

**Disclaimer:** Though this disinfection protocol follows the guidance published by the [CDC](https://www.cdc.gov), 3D Systems cannot guarantee with 100% certainty that treatment per the above instructions will result in the total eradication of coronavirus.

Contact us for more information:

healthcare@3dsystems.com | www.simbionix.com

 3D SYSTEMS®